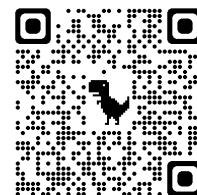




SOUTHWEST AREA INCIDENT MANAGEMENT TEAM TEAM 4 – AARON HULBURD – INCIDENT COMMANDER



Southwest Area Type 2 Incident Management Team 4 assumes command of lightning-caused Kane Fire

August 8, 2023 – Daily Update

Acres: 3,247 acres
Cause: Lightning
Containment: 0%
Total personnel: 165

Start Date: August 4, 2023
Location: 11 miles south of US 89A, near Forest Road
220, North Kaibab Ranger District, AZ
Fuels: Pinyon pine/juniper with grasses and sage

Highlights: The Southwest Area Type 2 Incident Management Team 4, led by Incident Commander Aaron Hulburd, assumed command of the Kane Fire at 6:00 AM this morning, Tuesday, August 8, 2023. The Type 2 Incident Management Team brings additional resources and management capabilities to implement a full suppression strategy for the Kane Fire. The Kane Fire was first detected on August 4, following a lightning storm on the evening of August 3.

Operations: As additional resources arrive, fire managers will develop strategies to fully contain the fire while protecting valuable resources in the area, including natural and cultural resources, and private property east of the fire. Firefighters are planning to install sprinkler systems around the historic structures at Kane Ranch to increase protections as southwest winds push the fire toward the east. Fire managers estimate the fire grew approximately 50 acres yesterday; however, the total acreage decreased from the previous day due to more accurate mapping of the incident. Fire crews are scouting State Route 89A as a potential feature to prevent any future fire spread to the north. Because the eastern portion of the Kaibab Plateau is in a rain shadow, fuels are drier than normal and more receptive to ignition, particularly during high wind events at the hottest time of the day.

Weather: A Red Flag Warning has been issued over the Kane Fire area today, bringing increasing southwest winds and only a slight chance of rain. Any storm that does form could bring strong gusty outflow winds that could influence fire spread. These southwest winds will likely continue through much of tonight. Deeper moisture will arrive during the day on Wednesday with a better chance of precipitation. Deep moisture will remain over the area through at least Thursday.

Closures: In the coming days, the Kaibab National Forest plans to issue a temporary safety closure for the Kane Fire area, including affected roads and trails. The purpose of the closure order will be to protect public health and safety during the Kane Fire, and to protect assigned firefighting personnel engaging in wildland firefighting operations. The full closure order and map will be posted on the Kaibab National Forest website at <https://www.fs.usda.gov/alerts/kaibab/alerts-notices>.

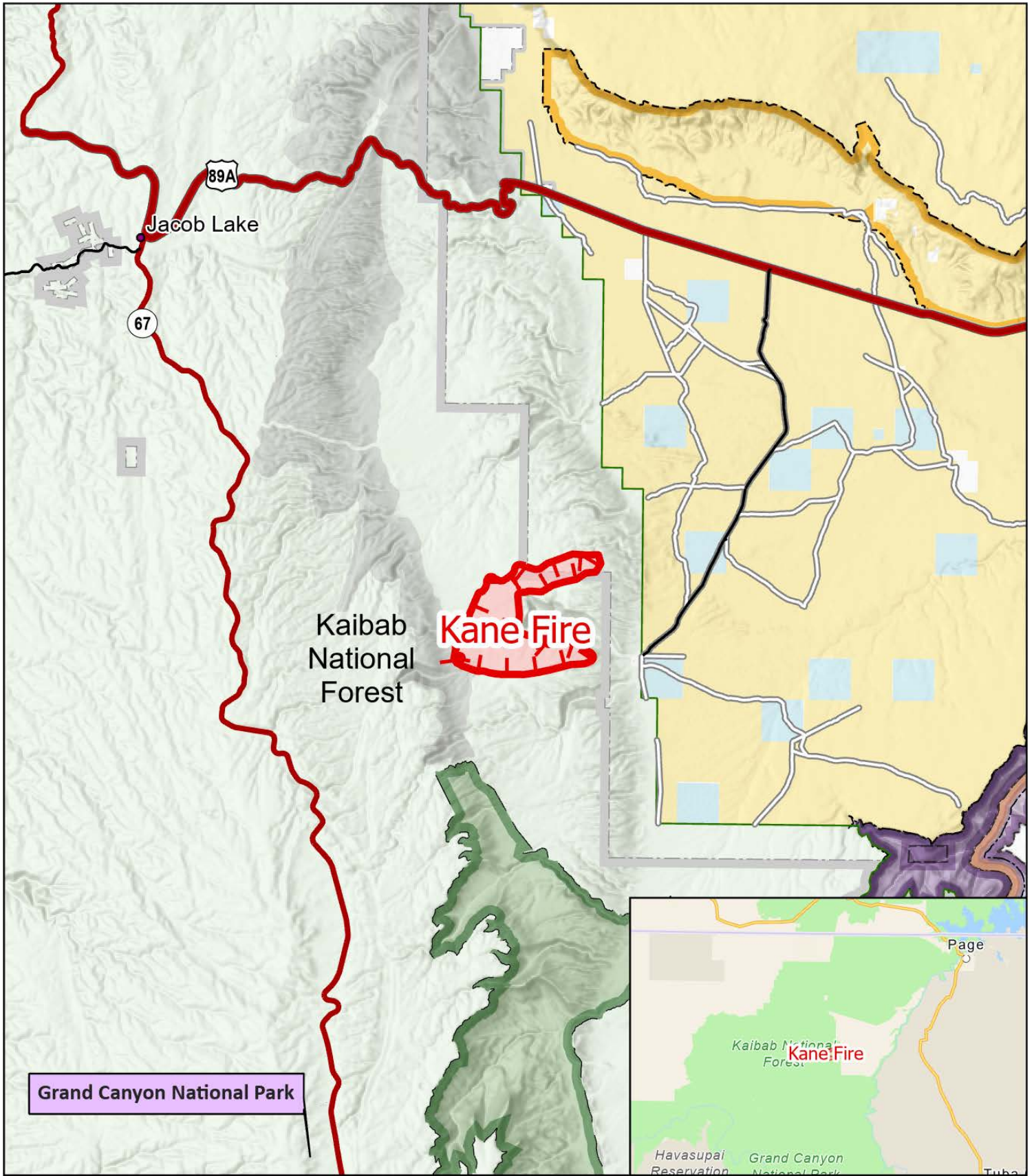
Safety: The health and safety of firefighters and the public are always the first priority. Members of the public should stay away from Kane Fire operations. A temporary flight restriction (TFR) is in place over the area, which includes unmanned aircraft, or drones. More information on the dangers drones pose to wildland firefighting aircraft and personnel on the ground can be found at: <https://uas.nifc.gov/>.

Smoke: Smoke from the Kane Fire may be visible in the surrounding areas of Page, Tuba City, Tusayan, Flagstaff, and Fredonia, AZ. Although smoke is visible from many areas south of the Grand Canyon, it is generally spreading to the northeast. Smoke-sensitive individuals and people with respiratory problems or heart disease are encouraged to take precautionary measures. An interactive smoke map at <https://fire.airnow.gov/> allows you to zoom into your area to see the latest smoke conditions.

Fire updates are posted on [InciWeb](#) and the [Kaibab NF website](#), [Facebook](#), and [Twitter](#) pages

Email: 2023.kane@firenet.gov • **Phone:** (928) 421-4983 • **Office Hours:** 8:00 AM – 8:00 PM

###



PUBLIC INFORMATION

Kane
 AZKNF-000667
 8/8/2023
 3,247 acres at 8/7/2023
 1:200,000 -
 8/8/2023 0853
 Acres from IR and GPS
 North American 1983 Datum.

-  Uncontained
-  Wildfire Daily Fire
-  Perimeter
-  Bureau of Land Management Lands

-  National Park Service Lands
-  State Lands

